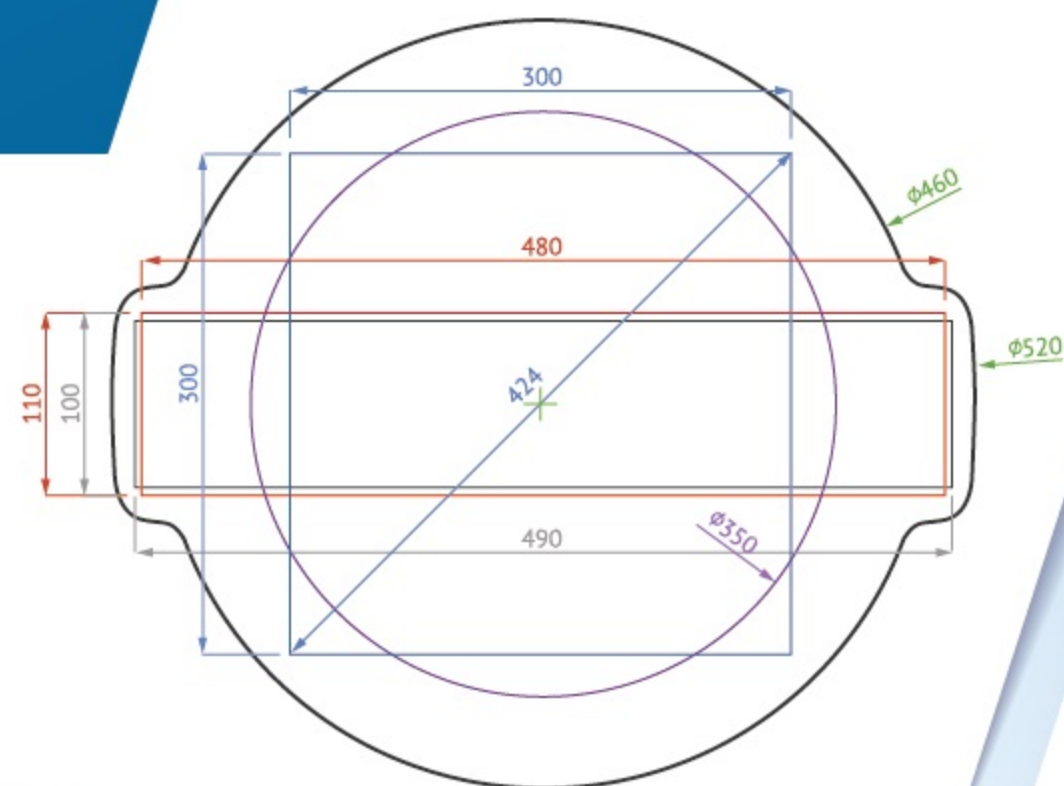


6000T機台出口尺寸  
Attainable Size of 6000T Extruder



擠型最大尺寸  
Capacity



圓管 ROUND PIPE  
~Φ350mm



方管 SQUARE PIPE  
~300\*300mm



無縫管 SEAMLESS PIPE  
~Φ337\*216mm



# HISTORY

## 歷史沿革

大地工業為台灣專業鋁擠型廠，自1967年創立以來，不斷精進製造工藝。因應市場需求，2010年增設全台灣最大 6000 噸鋁擠型機，專注於生產超大鋁擠型。引進 ISO 9001品質系統，以穩定的製程提供優良的服務品質、迅速的交期、跨產業的客製化鋁擠型產品，贏得全球二十餘國的客戶信賴。

Goodcomer was established in 1967 ; we are an experienced manufacturer who aims to provide customized aluminum extrusions with a great diversity for industrial applications. In 2010, we have setup 6000-ton extruding production line which plays the leading pioneer in Taiwan in response to worldwide market demands. We are ISO 9001 certified and we constantly put efforts into excellent customer service, products with high quality and fast delivery for our clients from more than twenty countries. We are a reliable and supportive partner to all your solutions.

## 大地工業股份有限公司 GOODCOMER CO., LTD.

### 公司 Office

TEL : +886-2-2285-9830  
FAX : +886-2-2282-6002  
ADD : 247018 新北市蘆洲區重陽街14號  
No.14, Chongyang St., Luzhou Dist.,  
New Taipei City 247018, Taiwan

www.goodcomer.com  
service@goodcomer.com



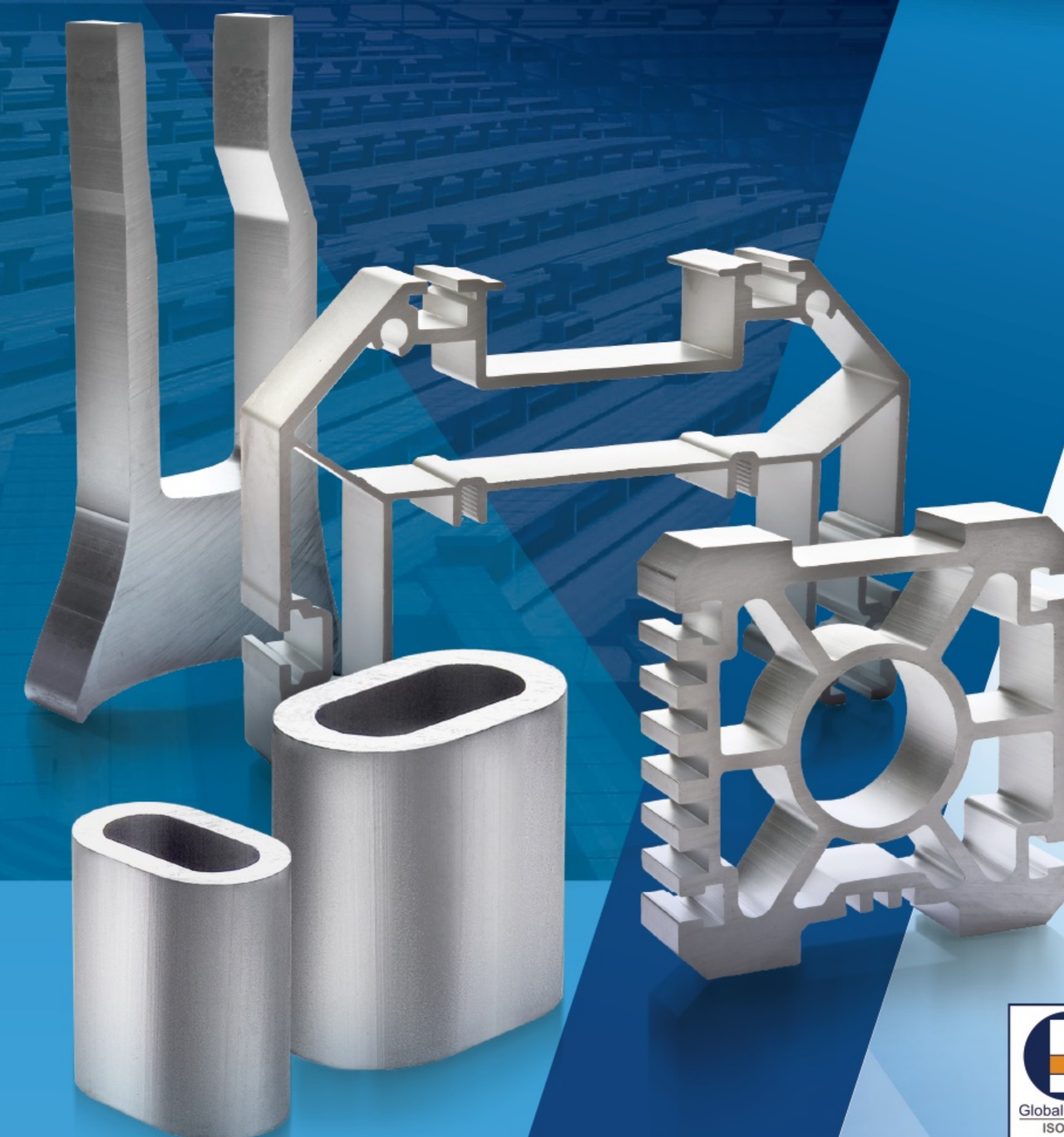
2020.08

### 工廠 Factory

TEL : +886-3-490-1326  
FAX : +886-3-490-6966  
ADD : 328005 桃園市觀音區新富路999號  
No. 999, Xinfu Rd., Guanyin Dist.,  
Taoyuan City 328005, Taiwan

## 鋁擠型

## ALUMINUM EXTRUSION



GOODCOMER  
SINCE 1947





## 服務項目

# SERVICE

### 加工服務 Production Process

模具設計與製造  
Die designing and making

擠型 | 備有4"~16" 鋁合金棒  
Extruding | Operation with 4"~16" billets

CNC加工工件最大 | L8500xW500xH350mm  
Mechanical Processing | L8500xW500xH350mm Max.

表面處理 | 廠內自設陽極處理設備  
Surface Finishing | Anodizing facility on-site

### 鋁合金材質 Aluminum Alloy

1000  
系列  
Series

3000  
系列  
Series

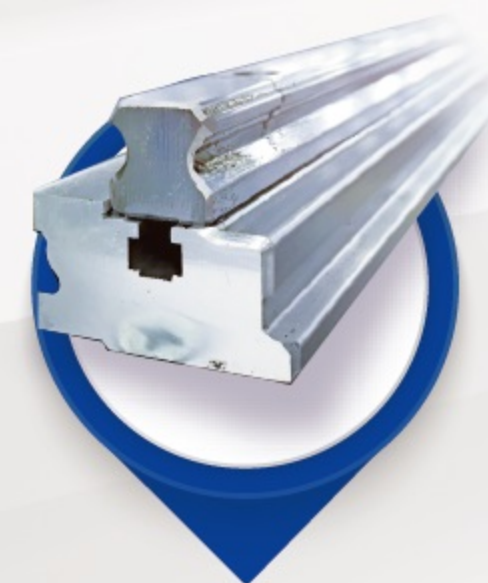
5000  
系列  
Series

6000  
系列  
Series

7000  
系列  
Series

## 行業應用

# APPLICATIONS



### 自動化 Automation Parts

鋁軌、昇降柱、線性滑軌  
Rails、Pillars for automation、Linear Slider



### 交通運輸 Transportation

甲板、車廂  
Ship Deck、Vehicle Body



### 吊重五金 Wire Rope Fittings

無縫鋁合金壓頭  
Seamless Aluminum Ferrules



### 機構外殼 Enclosure

馬達殼、電池殼  
Motor Case、Power Supply Case



### 散熱片 Radiator

LED燈罩、CPU散熱片  
LED Heatsink、CPU Heatsink



### 建築建材 Construction

超大型帷幕牆、防水捲門  
Curtain Wall、Floodgate